

Frequently Asked Questions Fall 2020

1. How do I safely lock my bike on campus?

See the [Facilities Bicycling Website](#) for links, including Northeastern University Police Department's (NUPD) website that describes safe bike locking. There are hundreds of bike racks on campus as well as several secure indoor bike rooms ("cages"), all of which are included on the website bike map. The University also offers self-repair stations. NUPD offers students, staff and faculty a FREE bicycle registration service.



2. Do we compost?

Since 2006, Northeastern has been partnering with [local organic waste recycling companies](#) to manage food waste. In 2019, 760 tons of pre/post consumer food waste were collected for composting.



3. Where can I recycle?

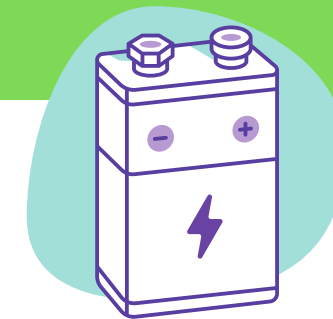
Designated bins are located around campus and in dormitory trash rooms. New signage provides clear information to help you choose the correct bin.

Remember: "when in doubt, throw it out"!



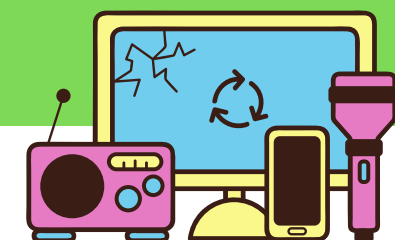
4. How do I safely recycle used batteries?

Northeastern recycles all types of batteries. To avoid potential fire hazards, tape over both ends and/or contact spots on all batteries. Take them to the battery recycling bin on the 1st floor of Columbus Place, or submit a work order through Facilities Customer Service to have them picked up (workrequest.neu.edu/FAWorkRequestForm.aspx).



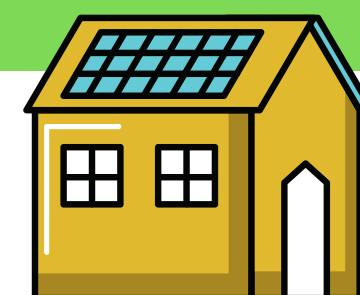
5. What do I do with old electronics?

Many manufacturers and retailers of electronics accept used devices for recycling, often for free. For more information, **students** should go [here](#). Northeastern **employees** should go [here](#).



6. How can I be more sustainable at home/office/school?

Follow the recycling page/information for the city/town where you live. Reusable water bottles, coffee mugs, and bags reduce waste and plastic. Reduce food waste by eating leftovers and cooking in large quantities to freeze for future meals. Reduce energy by wearing a sweater/layers inside. Is your on-campus office or residence too hot/cold? Submit a work order using the link above. For more tips see Facilities.Northeastern.edu/Sustainability



7. How can I be sustainable during COVID?

Carry a reusable mask and utensils with you. Rinse and recycle to-go containers whenever possible. **All PPE should be disposed of in trash bins** (masks, gloves, face shields). Do **not** recycle any PPE! Cut the ear loops on disposable masks before throwing them out, to keep wildlife from getting tangled in them. If you shop online, flatten and recycle cardboard boxes, remembering to separate Styrofoam and other packaging materials that contaminate the recycling stream.



8. How can I get involved in sustainability/sustainable organizations?

Visit Facilities.Northeastern.edu/Sustainability and scroll to the bottom to see upcoming events. Faculty/staff can find the Green Office Certification Program listed there as another way to get involved! Student groups are listed here: <https://www.northeastern.edu/admissions/student-life/clubs/>