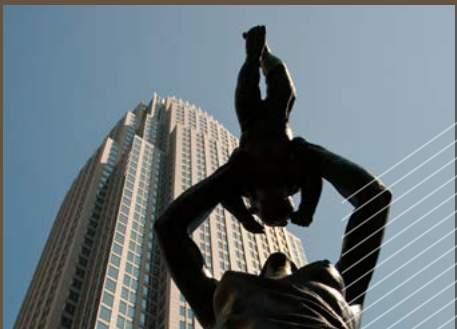


Northeastern University Charlotte



Welcome to Charlotte, North Carolina
A great place to invest in your future.



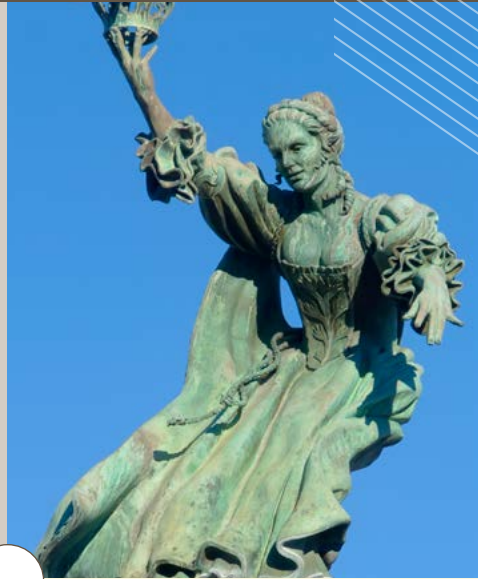
1 City Character

Southern comfort meets big-city energy.

While “y’all” still comes up in conversation, Charlotte, a city within Mecklenburg County, North Carolina, is on the rise, with developments popping up all over the place. And while it may look like a brand new city with contemporary skyscrapers, there’s actually a lot of history here.

Chartered by European settlers in 1768, Charlotte was home to the first U.S. gold rush in 1799. By the late 1800s, the city took off as a railroad junction and cotton mill hub. Today, Charlotte is the largest city in North Carolina and one of the nation’s fastest-growing metropolitan areas.

Living in Charlotte means enjoying all the amenities of a big city—arts, culture, cuisine, and sports—sans all the hustle and bustle. In fact, you’ll find that Charlotte is a pretty chill city where most folks don’t feel the need to always be in a hurry.



CITY SYMBOLS

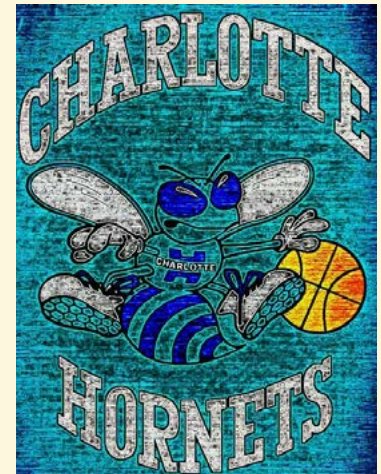


The Crown

Back in 1768, Charlotte was home to a large group of colonists who remained loyal to the British Crown. In hopes of receiving a continuous supply of money and food from King George III, these settlers named the city after his wife Queen Charlotte Sophia of Mecklenburg-Strelitz. She’s also the reason Charlotte is nicknamed the Queen City.

The Hornet’s Nest

During the Revolutionary War, as the Redcoats marched north under frequent, persistent attacks from local militia, a British officer dubbed the Charlotte area “a hornet’s nest of rebellion.” Today, a hornet’s nest remains a prominent city symbol, showing up on the Charlotte-Mecklenburg Police Department seal and serving as the inspiration behind the city’s NBA team name.



1 City Character



CITY OF FIRSTS

1799

The first discovery of gold in North America was 25 miles east of Charlotte.

1837

The first branch of the U.S. Mint opened in Charlotte.

1949

The first NASCAR Strictly Stock race was held in Charlotte.

1959

The first Family Dollar store opened in Charlotte.

1985

The first lightweight, orange plastic traffic barrels were designed and patented in Charlotte.

CITY STATS

842,051

City population estimate
U.S. Census Bureau, 2016

33.8

Median age estimate
U.S. Census Bureau, 2016

30°F

Average low temperature in January

89°F

Average high temperature in July

4.39"

Average rainfall in March

4"

Average annual snowfall

7.25%

Mecklenburg County sales tax

\$55,599

Median household income
U.S. Census Bureau, 2016



CITY RANKINGS

#3

Top Moving Destinations in the U.S.
United Van Lines, 2015

#3

Largest Banking Center in the U.S.
Charlotte Observer, 2017

#8

Best Big Cities for Jobs
Forbes, 2016

#9

Fastest-Growing Cities
Forbes, 2016

#14

Best Places to Live in the U.S.
U.S. News & World Report, 2017

1 City Character



COST OF LIVING

Charlotte consistently ranks as one of the most affordable big U.S. cities, with a cost of living that's about 5% below the national average. When comparing the Cost of Living Index ratings for the nation's top 40 metro markets, **Charlotte ranks #9 at 94.8, while San Antonio ranks #1 at 87.5 and New York City ranks #40 at 230.8.** You'll also find the property taxes in Charlotte are among the lowest in the country.

SOURCE: C2ER Cost of Living Index, Q1 2017

QUALITY OF LIFE EXPLORER

Curious about the quality of life in Charlotte?

Visit mcmap.org/qol to explore the city's neighborhoods, economics, education, environment, housing, and transportation.

LOCAL ECONOMY

Mecklenburg County sits in the heart of a strong economic region. It ranks as the 61st wealthiest metro in the world, with a metropolitan GDP per capita of \$53,142. When it comes to the labor pool, the Charlotte metro area has a high demand for science, technology, engineering, and math (STEM) occupations, especially in middle-skills jobs.

SOURCE: Mecklenburg County Community Pulse Report, 2017

2 Notable Neighborhoods

Seven distinct districts within one great city.

Charlotte is home to more than 199 neighborhoods, each with a distinctive feel and energy. While there are plenty of places to live in Uptown (Center City), where our campus is located, many folks choose to live in the neighborhoods that surround the metro area's center, such as the following seven:



1. BALLANTYNE

Zip Code: 28277

Among the city's most recently developed areas, Ballantyne has no shortage of shopping, dining, or golf course options. Located less than 20 miles from Uptown, this upscale neighborhood in South Charlotte is extremely family friendly and quickly becoming one of the city's most popular suburbs.

Local Highlights:

- **Flying Biscuit Cafe**, a prime spot for Southern-inspired breakfast
- **Ballantyne Corporate Park**, an outdoor destination with several parks and ponds
- **Ballantyne Village**, a boutique-style complex with shops, food, and entertainment
- **Dana Rader Golf School**, a top-ranked U.S. destination for taking golf lessons



Charlotte

Verbal Quirk

Much to the confusion of anyone who isn't from the Queen City, locals have long referred to Charlotte's central business district as Uptown instead of Downtown. Because this part of the city sits at a higher elevation than the surrounding areas, you're literally going up to town.

2 Notable Neighborhoods



2. COTSWOLD

Zip Code: 28211

Nestled five miles from Uptown, Cotswold carries a warm, inviting community vibe. From an assortment of eateries to a sundry of shops, this neighborhood lined with 1950s ranch-style homes has plenty of things to see and do.

Local Highlights:

- **Cotswold Marketplace**, a mecca of goods created by local merchants
- **Leroy Fox**, a place for Southern farm-fresh fare
- **The Wax Museum**, a hot spot for vintage vinyl and retro records
- **Toys & Co**, an old fashioned toy store experience



3. DILWORTH

Zip Code: 28203

One of the city's historic districts, Dilworth offers grand front-porch architecture, charming bungalows, nice apartments, local shops, and a growing food and craft beer scene. Also known for its outstanding walkability and easy access to public transportation, this neighborhood sits less than a mile southeast of Uptown.

Local Highlights:

- **Bakersfield**, a culinary hot spot for Mexican street fare
- **Freedom Park**, a beautiful 98-acre park with a 7-acre lake
- **Festival in the Park**, an annual event featuring the work of area artists
- **Wine & Design**, a creative atmosphere that blends sipping vino with painting art

2 Notable Neighborhoods



Timeless Beauty

More than just a city street lined with fine old homes and willow trees, Queens Road West in Myers Park is often referred to as the Champs-Élysées of Charlotte. It's only a mile long, but its beauty leaves a long-lasting impression, positioning Charlotte as a city of grace and charm.

4. MYERS PARK

Zip Codes: 28207, 28209 and 28211

Featuring tree-lined streets and stately homes, Myers Park is one of the oldest and most prestigious neighborhoods in Charlotte. Less than four miles southeast of Uptown, this walkable neighborhood is home to a cluster of boutique shops, world-class restaurants, and places of worship.

Local Highlights:

- **Charlotte Nature Museum**, a great place to experience wildlife
- **Little Sugar Creek Greenway**, a fantastic four-mile stretch for walking, running, and biking
- **Lumiere on Providence Road**, a fancy place for French cuisine
- **The Manor Theater on Providence**, a destination for indie and foreign films

5. NORTH DAVIDSON

Zip Codes: 28205 and 28206

Dubbed NoDa, the historic North Davidson neighborhood features eclectic art galleries, live music venues, and creative culinary options. A favorite spot among 20- and 30-somethings, NoDa is located two miles northeast of Uptown.

Local Highlights:

- **Davidson Street Public House**, a cozy, upscale speakeasy featuring craft brews
- **NoDa Eclectic Marketplace**, a Saturday hot spot for handmade goods
- **Pura Vida Worldly Art!**, a gift store that promotes fair trade and international art
- **The Evening Muse**, an artsy music venue for local, regional, and national talent

2 Notable Neighborhoods



6. SOUTH END

Zip Codes: 28203 and 28209

A more relaxed version of Dilworth and NoDa, the historic South End neighborhood offers a harmonious blend of old and new. The old brick mills and factories within this area have been converted into bars, restaurants, and stores. Within walking distance of Uptown, the South End also boasts easy access to the city's light rail and B-cycle bike-sharing system.

Local Highlights:

- **Atherton Farmers Market**, a community hub for local produce and products
- **Big Ben**, a British-inspired pub serving up authentic food and drink
- **Inner Peaks Climbing**, a fitness center with 17,000 square feet of indoor rock climbing
- **Olde Mecklenburg Brewing**, a classic German-style brewery, Brauhaus, and Biergarten



7. UNIVERSITY CITY

Zip Code: 28262

Located to the northeast of Uptown, the University City neighborhood is among the city's most culturally diverse. It offers all types of living spaces, from homes on tree-lined streets to apartments near urban mixed-use developments. Neighborhood attractions and amenities encompass racing, restaurants, and retail.

Local Highlights:

- **PNC Music Pavilion**, a hot spot for late-night entertainment, from concerts to comedy shows
- **Reedy Creek Park**, a place to hike, fish, and play 18 holes of disc golf
- **The Flying Saucer**, a neighborhood gem that boasts burgers, brats, and 80 beers on tap
- **Wine Vault**, a great place for wine, beer, and live music

3 Apartment Search

Feel at home wherever you live.

Given Charlotte’s growing popularity, you’ll see a continuous flow of new apartment buildings popping up across the city. With peak apartment hunting season in May, it’s best to begin your search in January. By the time August rolls around, apartments can become a little harder to find.

According to Real Data, which tracks apartment markets in the Southeast, the average apartment rent in the Queen City, as of February 2017, is \$1,082, with the rent being the highest in Uptown and the lowest just northeast of Uptown. While there are thousands of apartment units across the city, here are some sample living spaces near our Uptown campus:

UPTOWN NEIGHBORHOOD



Cadence Music Factory

606 N. Carolina Music Factory Boulevard
704.751.0183 | cadencemusicfactory.com

Studio – 2 bedrooms
Less than 2 miles from our campus

Presley Uptown

900 E. Stonewall Street
844.329.6792 | presleyuptown.com

Studio – 3 bedrooms
Less than 2 miles from our campus

BALLANTYNE NEIGHBORHOOD

Bell Ballantyne

16311 Hawfield Way Drive
844.230.6242 | bellapartmentliving.com

1 – 3 bedrooms
Approximately 25 miles from our campus



Plantation Park

14325 Plantation Park Boulevard
844.855.5096 | plantationparkonline.com

1 – 3 bedrooms
Approximately 22 miles from our campus

DISCLAIMER: Northeastern University-Charlotte does not endorse any off-campus housing or service. The information provided by landlords, property owners, and other businesses is not screened or audited by our university in any way before publishing.

3 Apartment Search

COTSWOLD NEIGHBORHOOD

Eastover Ridge

3600 Eastover Ridge Drive
704.347.3473 | eastoverridge.com

1 – 3 bedrooms
Approximately 4 miles from our campus



Strawberry Hill

4051 Bannockburn Place
704.366.1944 | marshproperties.com

1 – 3 bedrooms
Approximately 6 miles from our campus

DILWORTH NEIGHBORHOOD



Berkshire Dilworth

1351 E. Morehead Street
704.326.2296 | berkshirecommunities.com

Studio – 2 bedrooms
Approximately 2 miles from our campus

Solis Dilworth

1010 Kenilworth Avenue
855.366.7022 | solisdilworth.com

Studio – 2 bedrooms
Approximately 2 miles from our campus

MYERS PARK NEIGHBORHOOD

Inspire SouthPark

345 Sharon Township Lane
704.817.7096 | live-inspire.com

Studio – 3 bedrooms
Approximately 6 miles from our campus



SouthPark Morrison

721 Governor Morrison Street
704.900.2717 | connorgroup.com

Studio – 2 bedrooms
Approximately 6 miles from our campus

DISCLAIMER: Northeastern University-Charlotte does not endorse any off-campus housing or service. The information provided by landlords, property owners, and other businesses is not screened or audited by our university in any way before publishing.

3 Apartment Search

NORTH DAVIDSON NEIGHBORHOOD



Mercury NoDa

3310 N. Davidson Street
855.631.3101 | mercuryroda.com

Studio – 3 bedrooms
Approximately 3 miles from our campus

Yards at NoDa

703 Rollerton Road
855.779.2473 | yardsatnodaapts.com

Studio – 3 bedrooms
Approximately 3 miles from our campus

SOUTH END NEIGHBORHOOD



Camden South End

1205 South Tryon Street
866.652.5821 | camdenliving.com

Studio – 2 bedrooms
Approximately 1 mile from our campus

Catherine 36

109 West Catherine Street
704.752.8550 | catherine36.com

1 bedroom
Approximately 1 mile from our campus

UNIVERSITY CITY NEIGHBORHOOD

Hunt Club

100 Heritage Pointe Road
704.271.5483 | huntclubcharlotte.com

1 – 2 bedrooms
Approximately 10 miles from our campus



University Center

1421 Baseline Road
704.774.3805 | universitycenterapts.com

1 – 3 bedrooms
Approximately 10 miles from our campus

DISCLAIMER: Northeastern University-Charlotte does not endorse any off-campus housing or service. The information provided by landlords, property owners, and other businesses is not screened or audited by our university in any way before publishing.

4 City Happenings

A little something for everyone.



Tasty Traditions

Hushpuppies, hominy grits, barbeque, and tea are among the top food and drink staples in Charlotte. Just know that barbeque and tea take on a different persona in the South. Unless otherwise noted, barbeque refers to pulled pork and tea refers to sweet tea.



GO BACK IN TIME

Having made the transition from the Old South (early 1800s) to the New South (late 1800s), you'll find Charlotte has a unique, diverse history that runs deep.

Points of Interest:

- **Levine Museum of the New South**, experience the spirit of the South from the late 1800s
- **Reed Gold Mine**, pan for gold at the site of the nation's first gold discovery
- **Pike's Old Fashioned Soda Shop**, taste the authenticity of the great American diner
- **The Charlotte Museum of History**, explore the settlement of the Carolina Backcountry

TASTE THE TOWN

The dining scene in Charlotte is hot, with several independent restaurants focused on "farm to fork" fare that features local ingredients from the area's more than 350 farms.

Points of Interest:

- **7th Street Public Market**, head out for local produce, sweet treats, and wine
- **NoDa Brewing Company**, try a Hop, Drop 'n Roll IPA or a Coco Loco Porter
- **Tour De Food**, take a stroll and savor the city's culinary scene
- **Trolley Pub**, hop from brewery to brewery on a pedal-powered tour

4 City Happenings



APPRECIATE THE ARTS

When it comes to visual and performing arts, Charlotte deserves a standing ovation. The city is home to unique and diverse cultural attractions, from museums to stage shows.

Points of Interest:

- **Bechtler Museum of Modern Art**, set your sights on over 1,400 pieces of mid-20th century artwork
- **Blumenthal Performing Arts**, take in a Broadway show or local ballet production
- **Mint Museum Uptown**, check out contemporary, American, and craft collections
- **The Light Factory**, explore one of only four museums in the country to focus on photography and film

Local Oddity

Roosting outside the Bechtler Museum of Modern Art, you'll find a 17-foot avian adorned with more than 7,500 pieces of colored glass. Created by Niki de Saint Phalle, the Firebird sculpture has become a local landmark, with some referring to it as "majestic" and others calling it "the disco chicken."



PLAY THE FIELD

Whether you're into touchdowns, home runs, or slam dunks, Charlotte is home to nearly every type of American sports team.

Points of Interest:

- **Bank of America Stadium**, touch down with Carolina Panthers football
- **BB&T Ballpark**, slide into a Charlotte Knights baseball game
- **Bojangles' Coliseum**, get in the zone with Charlotte Checkers hockey
- **Mecklenburg County Sportsplex**, kick it with Charlotte Independence soccer
- **Spectrum Center**, swarm to see the Charlotte Hornets shoot some hoops

4 City Happenings



Racecar Central

Home to the NASCAR Hall of Fame and the Charlotte Motor Speedway, the Queen City is a haven for stock-car racing fans. Given the first NASCAR race took place here in 1949, it should come as no surprise that most of today's NASCAR racing teams are based near Charlotte.



EXPLORE THE OUTDOORS

With more than 17,600 acres of park space and a mild climate, Charlotte has plenty of outdoor activities for you to enjoy year-round. And if you're willing to cruise out to the North Carolina coastline, you can enjoy a beautiful day at the beach.

Points of Interest:

- **Carolina Raptor Center**, see more than 25 species of raptors up close
- **Freedom Park**, take a walk or play some b-ball at this 100-acre park
- **McDowell Nature Preserve**, get back to nature at this 1,132-acre preserve
- **U.S. National Whitewater Center**, raft down the largest man-made whitewater river

ATTEND ANNUAL FESTIVITIES

You'll find Charlotte hosts at least one major outdoor event every month of the year. Here are some of the city's favorite annual festivities:

- **January** – MLK Holiday Parade
- **February** – Queen City Brewers Festival
- **March** – St. Patrick's Day Parade
- **April** – Bon Odori Japanese Dance Festival
- **May** – Speed Street and Coca-Cola 600 Race
- **June** – Queen City Jazz Fest
- **July** – Independence Day Festivals
- **August** – Charlotte Pride Festival
- **September** – Yiasou Greek Festival
- **October** – Oktoberfest
- **November** – Thanksgiving Day Parade
- **December** – First Night Charlotte

5 Travel Modes

Get around by bike, bus, car, light rail, or streetcar.

While Charlotte provides easy access to various modes of public transportation, the city lacks a cohesive transit system that spans the entire region, making it a very car-dependent community. However, if you live in areas of the city that are well-served by public transportation, such as Dilworth and NoDa, it's possible to get where you need to go without a car.



CHARLOTTE B-CYCLE

704.332.9585 | charlotte.bcycle.com

With 200 bikes and 24 stations in Uptown and surrounding neighborhoods, Charlotte has one of the largest urban bike-sharing programs in the Southeast.

CHARLOTTE AREA TRANSIT SYSTEM (CATS)

704.336.7433 | charlottenc.gov/cats

Serving more than 25 million passengers each year, the Charlotte Area Transit System has over 70 bus routes across the city and county.



CRUISE CARTS

336.264.3801 | cruisecarts.com

Take a free ride in a street legal golf cart that offers pick-up and drop-off services in Uptown, Dilworth, Myers Park, and NoDa.

CityLYNX Gold Line

704.336.7433 | charlottenc.gov/cats

A free streetcar system in Uptown that runs from the Spectrum Center to the Novant Health Presbyterian Medical Center.

LYNX Blue Line Light Rail

704.336.7433 | charlottenc.gov/cats

A rapid rail system that operates from I-485 at South Boulevard to Uptown.

Local Drive Times

A drive time study commissioned by the Charlotte Chamber of Commerce puts Charlotte's average mean commute time at 28 minutes, with Atlanta at 35 minutes and Washington, D.C. at 41 minutes.

Local Cycling Guide

Bicycles are legally identified as vehicles in North Carolina. If you're a bicyclist, be sure to learn the rules of the road by visiting charlottenc.gov/Transportation/Programs/Pages/Bicycle and downloading Charlotte's Cycling Guide.

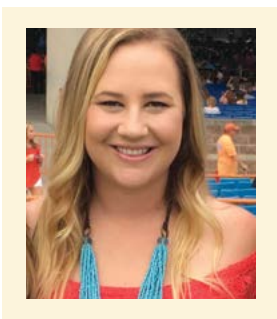
Top Walkable Neighborhoods

If you're looking for a place to live with a good walkability rating, you'll want to check out these five neighborhoods:
Uptown (First and Fourth Wards)
Plaza Midwood | South End | NoDa | Dilworth

6 Charlotte or Bust

Relocation advice from an ABSN program student.

Not willing to wait to start nursing school, many students move halfway across the country to attend our ABSN program. That's what Lexie did, and she's here to tell you it's worth it.



MEET LEXIE

ABSN Program, Class of 2018

Relocated to Charlotte from San Luis Obispo (2,571 miles)

Q. Why did you move to Charlotte for nursing school?

A. My mom is originally from Atlanta, and I have grandparents, aunts, uncles, and cousins that still live there. I wanted an accelerated nursing program that was within a reasonable driving distance of my family. I also wanted a change and sought to do something different. The program is only 16 months, so I figured it was worth coming to Charlotte to give it a try.

Q. How did you make the move to the Queen City?

A. I packed up my car and drove across the country with my best friend. Because I don't know how long I will stay in Charlotte, I felt it didn't make financial sense to ship all my stuff here. I am not opposed to staying here after graduation, it all just depends on where I can get a job.

Q. What neighborhood do you live in?

A. I live in the North Davidson (NoDa) neighborhood. It's about 10 minutes from Uptown, so it's really easy for me to get to campus. Because parking in Uptown is expensive, I take the bus when I need to go to campus. It's super easy. The bus drops me off a block away from school. Despite being so close to Uptown, NoDa still has a neighborhood vibe, which I like. I can get up, grab coffee, and walk my dog in the morning. There are a lot of shops and restaurants near me, and the amenities at my apartment complex are great.

Q. What's rent like in NoDa?

A. I found the apartments here to be less expensive than in the South End and Plaza Midwood neighborhoods. I have a roommate, which saves me

some money. If you live in a studio or one bedroom apartment here, it'll probably cost more than what you'd want to pay. But overall, I think the rent costs in NoDa are pretty reasonable compared to other neighborhoods, especially considering how close it is to Uptown.

Q. Why did you pick the NoDa neighborhood?

A. Actually, my roommate picked it. We got connected through the Roomie Match website, and I was lucky to find her. She had been living in Charlotte for a year already and was familiar with the neighborhood. So I feel I lucked out because I didn't have a clue about the neighborhoods.

Q. Where are some of your favorite places to go?

A. I typically don't go out a lot because school is my first priority. My philosophy is that because the program is so short, you can afford to give up a few weekends to get through it. But when I do go out and take time for myself, I like to head out to the breweries in the South End on a Saturday afternoon to relax, socialize, and enjoy the sunshine.

Q. What advice do you have for others considering the move to Charlotte?

A. Once you decide to come here, start planning right away because relocation is such a long process. Don't put off finding a place to live because moving will creep up on you. It's definitely no fun driving across the country with no idea of where you're going to live. Now that I'm here, I've found the people in Charlotte to be really friendly, and I've not had much trouble adjusting to life in the South.

7 Relocation Resources

Get settled in the Queen City.



LONG-DISTANCE MOVERS

Allied Van Lines

800.689.8684 | allied.com

American Van Lines

888.296.5458 | americanvanlines.com

Atlas Van Lines

800.638.9797 | atlasvanlines.com

Bekins

800.456.8092 | bekins.com

Mayflower

877.720.4066 | mayflower.com

North American Van Lines

800.228.3092 | northamerican.com

Two Men and a Truck

800.345.1070 | twomenandatruck.com

LOCAL UTILITIES

Duke Energy – Electricity

800.777.9898 | duke-energy.com

Piedmont Natural Gas – Gas

800.752.7504 | piedmontng.com

Mecklenburg County – Water and Sewer

704.336.7600 | charlottenc.gov/water

Charlotte CURB IT! – Trash & Recycling

311 | curbit.charmeck.org

AT&T – Telephone/Internet/TV

800.288.2020 | att.com

Time Warner Cable

877.566.4892 | timewarnercable.com

CITY OF CHARLOTTE

Emergencies and Related Services

Emergencies – 911

Non-emergencies – 311

Power outages – 800.power.on

Charlotte-Mecklenburg Government Agencies

311 | charmeck.org

Crime Stoppers

704.334.1600 | charlottecrimestoppers.com

Mecklenburg County Parks and Recreation

311 | parkandrec.com

Public Library of Charlotte and Mecklenburg County

704.416.0101 | cmlibrary.org



You must obtain a North Carolina driver's license within 60 days of establishing a permanent residence. Visit ncdot.gov/dmv/moving to download the Driver's Handbook for newcomers.

Northeastern University
Charlotte

101 North Tryon Street | Charlotte, North Carolina 28246 | 980.224.8466 | northeastern.edu/charlotte